

UVALDE COUNTY, TEXAS

Sur. 180



LINE	BEARING	DISTANCE
L1	N 71°12'39"E	120.88'
L2	N 50°00'57"E	91.08'
L3	N 75°25'23"E	118.39'
L4	N 87°45'33"E	98.54'
L5	N 69°48'58"E	158.14'
L6	N 54°37'26"E	157.33'
L7	N 83°43'45"E	22.40'
L8	N 83°43'45"E	269.73'
L9	S 87°52'57"E	137.24'
L10	S 51°54'17"E	180.31'
L11	S 15°28'14"W	99.31'
L12	N 70°49'39"E	71.09'
L13	S 70°49'39"W	124.23'
L14	N 65°29'20"E	150.73'
L15	N 70°36'58"E	191.98'
L16	N 65°42'28"E	184.73'
L17	S 84°00'40"E	79.78'
L18	S 84°00'40"E	107.33'
L19	N 59°23'09"E	176.79'
L20	N 89°56'53"E	187.02'
L21	N 81°47'33"E	108.63'
L22	N 50°26'38"E	191.51'
L23	N 50°26'38"E	90.36'
L24	N 86°59'56"E	180.74'
L25	N 74°15'34"E	196.02'
L26	S 51°45'01"E	128.08'
L27	N 59°40'16"E	231.76'
L28	N 73°19'46"W	153.22'
L29	N 70°15'54"E	148.15'
L30	S 84°05'52"W	80.19'
L31	N 77°28'53"W	237.81'
L32	N 82°09'33"W	195.99'
L33	N 68°32'15"W	104.60'
L34	N 61°21'13"W	109.22'
L35	N 74°33'14"W	84.05'
L36	N 40°44'05"W	173.25'
L37	N 38°35'28"W	159.84'
L38	N 56°59'33"W	296.92'
L39	N 84°11'47"W	96.07'

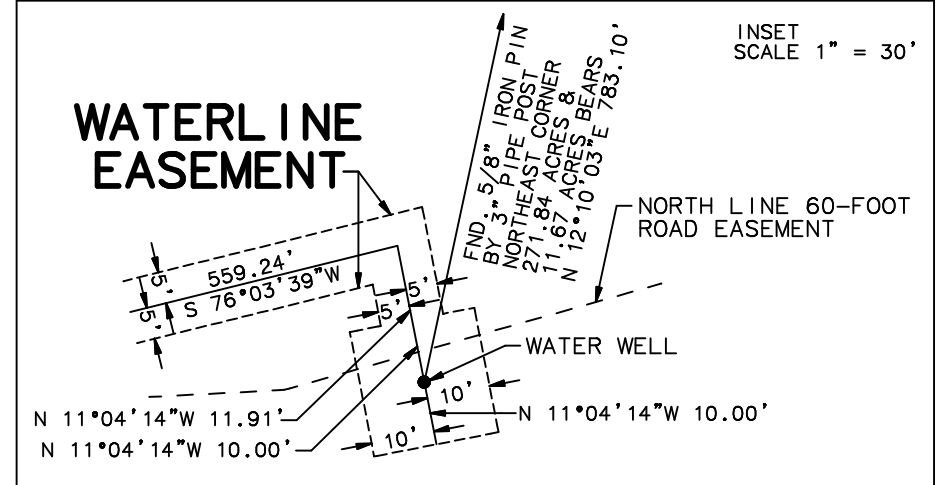
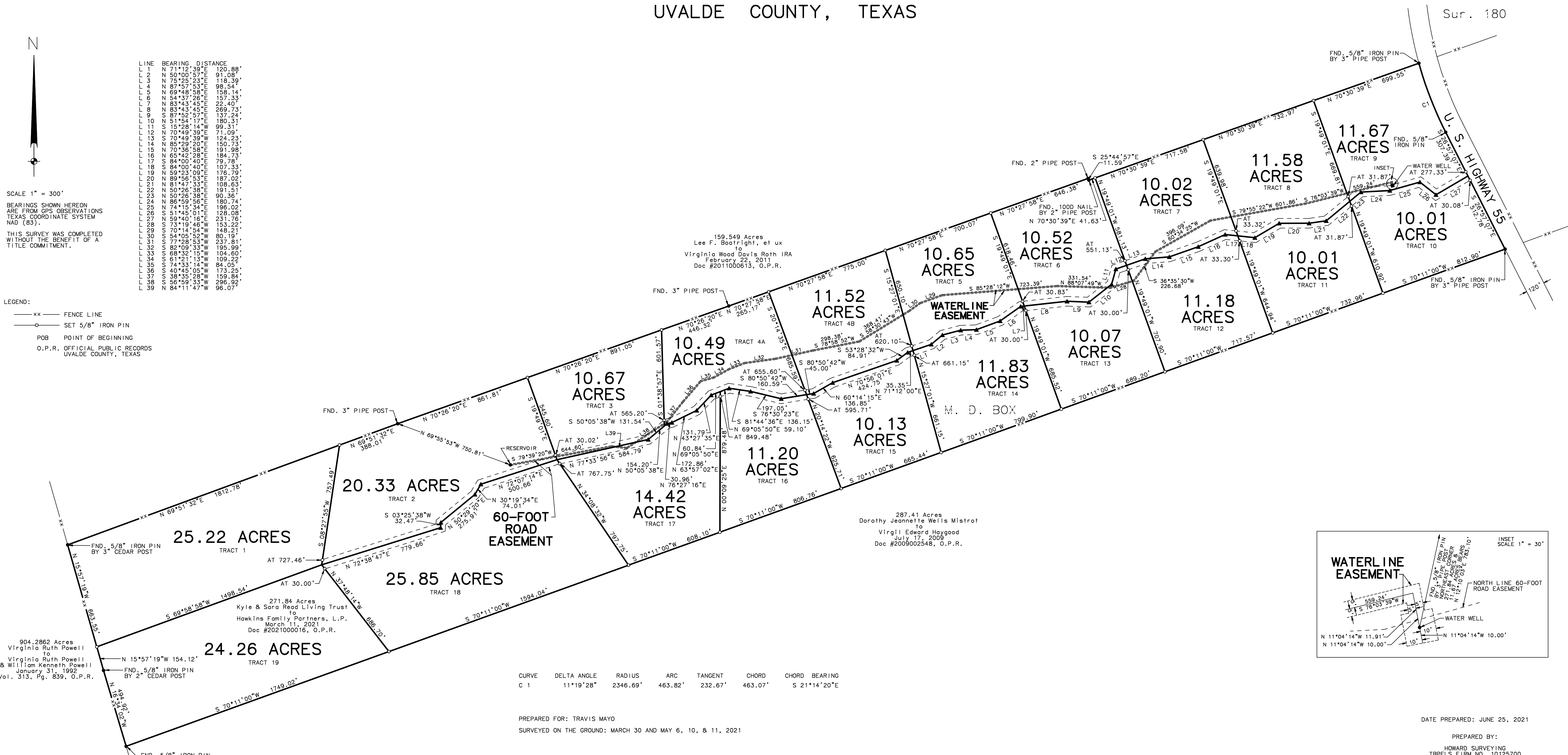
SCALE 1" = 300'

BEARINGS SHOWN HEREON ARE FROM GPS OBSERVATIONS TEXAS COORDINATE SYSTEM NAD (83).

THIS SURVEY WAS COMPLETED WITHOUT THE BENEFIT OF A TITLE COMMITMENT.

LEGEND:

- xx FENCE LINE
- SET 5/8" IRON PIN
- POB POINT OF BEGINNING
- O.P.R. OFFICIAL PUBLIC RECORDS UVALDE COUNTY, TEXAS



CURVE	DELTA ANGLE	RADIUS	ARC	TANGENT	CHORD	CHORD BEARING
C 1	11°19'28"	2346.69'	463.82'	232.67'	463.07'	S 21°14'20"E

PREPARED FOR: TRAVIS MAYO
 SURVEYED ON THE GROUND: MARCH 30 AND MAY 6, 10, & 11, 2021

DATE PREPARED: JUNE 25, 2021

PREPARED BY:
 HOWARD SURVEYING
 TBPEL'S FIRM NO. 10125700
 402 STATE HWY 173 SOUTH
 HONDO, TEXAS 78861
 830-426-4776

A Plat of 20 tracts of land, a 60-foot Road Easement, and a Waterline Easement situated about 23.8 miles N 39° W of Uvalde in Uvalde County, Texas.